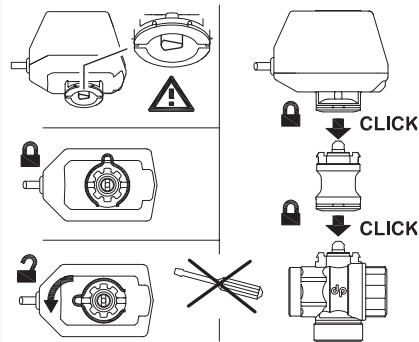


3-WAYS DIVERTER "L" BORED BALL MOTORIZED VALVE "FRIGO" LINE

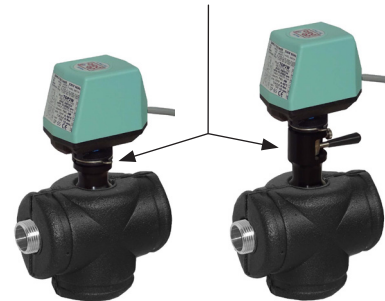
INSTRUCTION SHEET

SUITABLE FOR WATER, GLYCOL WATER OR LIQUIDS COMPATIBLE WITH **PTFE** AND **EPDM**. BEFORE INSTALLATION, MAKE SURE THAT THE HYDRAULIC CIRCUIT IS CLEANED OF SOLIDS SUCH AS WELDING OR THREAD RESIDUES.

Environment temperature	min. 0 °C max 65 °C
Fluid temperature	min. -15 °C max 110 °C
Pressure rating	16 bar
Differential pressure	max 6 bar
Electrical protection	IP 65



SPACER REQUIRED IN REFRIGERATION APPLICATIONS. MAXIMUM INSULATION THICKNESS 40 MM.



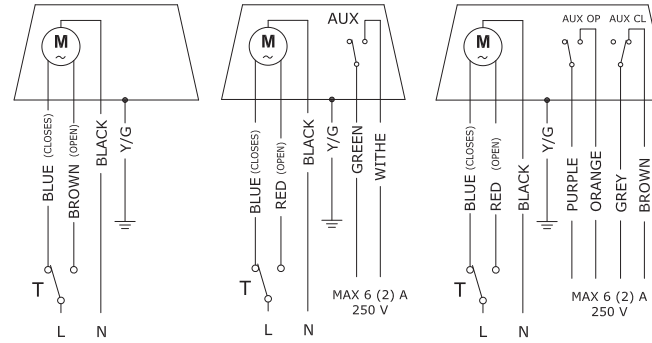
OPTIONAL **INSULATION SHELL**. ANTI-CONDENSATION FUNCTION, TEAR-OFF OPENING

230 Vac	24 Vac
P6A3	P6S3
P6A3W	P6S3W
P6A3X	P6S3X

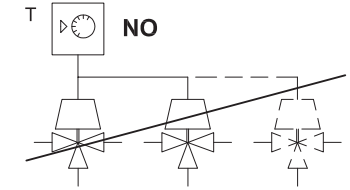
230 Vac	24 Vac
P6B3	P6C3
P6B3W	P6C3W
P6B3X	P6C3X

230 Vac	24 Vac
P6X3	P6Y3
P6X3W	P6Y3W
P6X3X	P6Y3X

rot. time
120" x 180°
30" x 180°
16" x 180°



3-WIRES CONTROL P6(...)

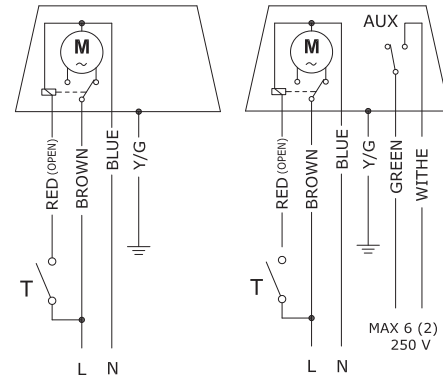


SEVERAL SERVOMOTORS WITH **3-WIRE CONTROL** **CANNOT BE CONNECTED IN PARALLEL** TO A SINGLE THERMOSTAT

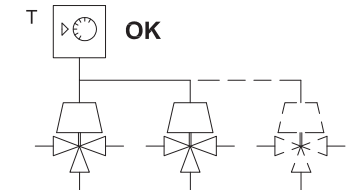
230 Vac	24 Vac
T6A3	T6S3
T6A3W	T6S3W
T6A3X	T6S3X

230 Vac	24 Vac
T6B3	T6C3
T6B3W	T6C3W
T6B3X	T6C3X

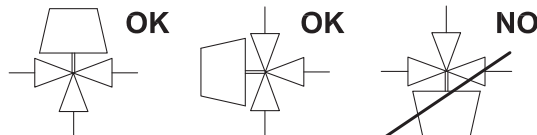
rot. time
120" x 180°
30" x 180°
16" x 180°



2-WIRES CONTROL T6(...)



SEVERAL SERVOMOTORS WITH **2-WIRE CONTROL** **CAN BE CONNECTED IN PARALLEL** TO A SINGLE THERMOSTAT



The informations in this document are intended for the company responsible for installation and maintenance. The hydraulic and electrical installation operations must be carried out by qualified personnel, in accordance with the laws and regulations of each country where the product is destined. The product must only be used in the application context for which it has been designed. De Pala srl, in the continuous process of improving its products, reserves the right to make any technical, dimensional and aesthetic changes it deems necessary without prior notice.